



SSHRC  CRSH

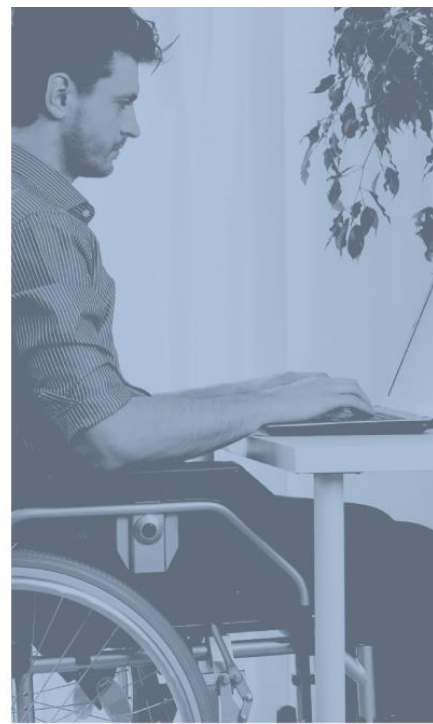
Funding for Psychological Scientists: Insight Grants

Peter Anderson, Emma Yoxon

September 14, 2021

Presentation Outline

- **Overview**
- **Joint Initiatives**
- **Eligibility Overview**
- **Committee Structure**
- **Adjudication Overview**
- **Application Preparation**



Insight Grants – Objectives & Features

APPLICANT | Principal Investigator
Co-applicants and/or Collaborators

DURATION | 2 - 5 years

VALUE | \$7,000 - \$100,000 (Stream A)
\$100,001 - \$400,000 (Stream B)

FUNDING | No separate envelope for Emerging Scholars

October 1, 2021 (8 p.m. eastern)

Formal Application (check internal deadlines)

IDG - GENERAL FEATURES:

- **APPLICANT** Principal investigator, emerging or established, working alone or in a team
- **CO-APPLICANT** Scholars affiliated with a postsecondary institution (may be international)
- **LENGTH** 1 to 2 years
- **VALUE** \$7,000 - \$75,000
- **FUNDING** Separate budget provided for emerging scholars (minimum 50 percent of the envelope)
- **APPLICATION** One-step application process
- **DEADLINE** **February 1, 2022 (8 p.m. eastern)**
(Please contact your institution for the internal deadline)

Updates to Insight Grants

INSIGHT GRANTS DEADLINE

- October 1, 2021 (Eastern)

IMPACTS OF COVID-19

- Department of National Defence Research Initiative (DNDRI) funding research on COVID-19
- Merit Review and Communication of Results
- Flexibility in Grant Applications
- Grants Administration Measures

TRI-AGENCY INTERDISCIPLINARY PEER REVIEW COMMITTEE

Multiple Applications (1)

Normally, researchers may not apply as an applicant for an Insight Grant and an Insight Development Grant within the same calendar year.

- **An exception** approved by SSHRC in 2017 : researchers who applied **unsuccessfully** for an Insight Development Grant in February can apply for an Insight Grant in October. SSHRC extends this exception to the multiple applications regulations for the foreseeable future.
- For example, researchers who applied for an Insight Development Grant in February 2021 and **were not successful** may apply for an Insight Grant in October 2021.

Multiple Applications (2)

Grant Retention:

- No limit to the number of applications on which a researcher may be listed as a co-applicant or collaborator.

Re-application:

- A current grant holder may submit a new application for the same type of grant, but only in their grant's final year (year in which the grant holder receives the final installment of their grant).

Please refer to [SSHRC's Regulations Regarding Multiple Applications](#) for more information.

Department of National Defence Research Initiative (DNDRI)

- A joint initiative of SSHRC and Defence Research and Development Canada (DRDC of Department of National Defence- DND)
- Supports social science and humanities research aligned with areas of interest in the Canadian Armed Forces (CAF) and DND
- Fosters effective, evidence-based strategies, policies and programs in research areas identified by DRDC
- Supplements valued at up to \$20,000 per year for three years, up to a total of \$60,000 maximum, will be awarded to successful Insight Grant recipients in addition to the annual value of the Insight Grant.

DNDRI Research Areas

1. Personnel – Recruitment & Selection

- selection tests

2. Readiness – Training & Development

- Emerging learning & training modalities

3. Social Processes in the Workplace

- Diversity, gender and armed forces
- Developing trust in diverse organizational teams and in cross-cultural settings
- Transition to civilian life

4. Operational Effectiveness

- Individual, social and cultural dimensions of radicalization
- Ethical dimension of using artificial intelligence in defence and security
- Human Dimensions of Cybersecurity
- Shaping attitudes, opinions, and behaviour
- Social and cultural demands of military operations
- Gender perspectives on operations, defence, and security
- Civil-Military relations
- Working effectively in diverse organizational teams and in cross-cultural settings

DNDRI funding related to COVID-19

DNDRI is also looking to fund SSH research on the impact of COVID-19:

- adjusting to isolation and working at home
- common reactions to crises and mitigation
- managing family stress
- reintegration and coping with the aftermath
- and characteristics of non-compliers and mitigation

For more information, consult: <http://www.sshrc-crsh.gc.ca/funding-financement/programs-programmes/dnd-eng.aspx>

Sport Participation Research Initiative (1)

- SPRI: joint Initiative with Sport Canada
- Supports research on matters related to enhancing participation in sports
- How to apply: select the SPRI joint initiative and clearly indicate how the proposed research applies to the SPRI objectives
- Application adjudicated by SSHRC peer review committees
- If application is ranked above the fifth and sixth sextiles, it is referred to Sport Canada



Sport Participation Research Initiative (2)

- **Grants:** \$7,000 - \$250,000 over 3 years (max \$100,000/year).
- Funds conference participation at annual Sport Canada Research Initiative Conference (up to \$20,000, in addition to the value of the grant).
- Funding conditions: participate in the annual Sport Canada Research Initiative Conference and provide knowledge transfer paper.

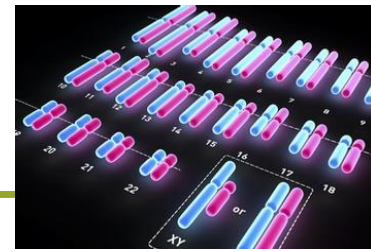
For more information:

http://www.sshrc-crsh.gc.ca/funding-financement/programmes-programmes/sport_can-eng.aspx

SPRI Target Areas



Societal Implications of Genomics Research



- ↘ Joint Initiative with Genome Canada: support social sciences and humanities research and related activities pertaining to research in the field of genomics.
- ↘ Applications received will be evaluated on the basis of all other proposals received and Genome Canada will determine which applications are relevant.
- ↘ More information is available on [Genome Canada](#) website.



- [Mitacs Accelerate](#): supports research internships of graduate students and/or postdoctoral fellows.
- Funding starts at \$15,000, co-funded by Mitacs and the partner.
- Submit to Mitacs after SSHRC competition results have been announced.

HOW IT WORKS

1. The match



A student, a supervising professor, and a partner organization develop a research project

2. The proposal



Applicants submit a [proposal](#) via a Mitacs representative

3. The project

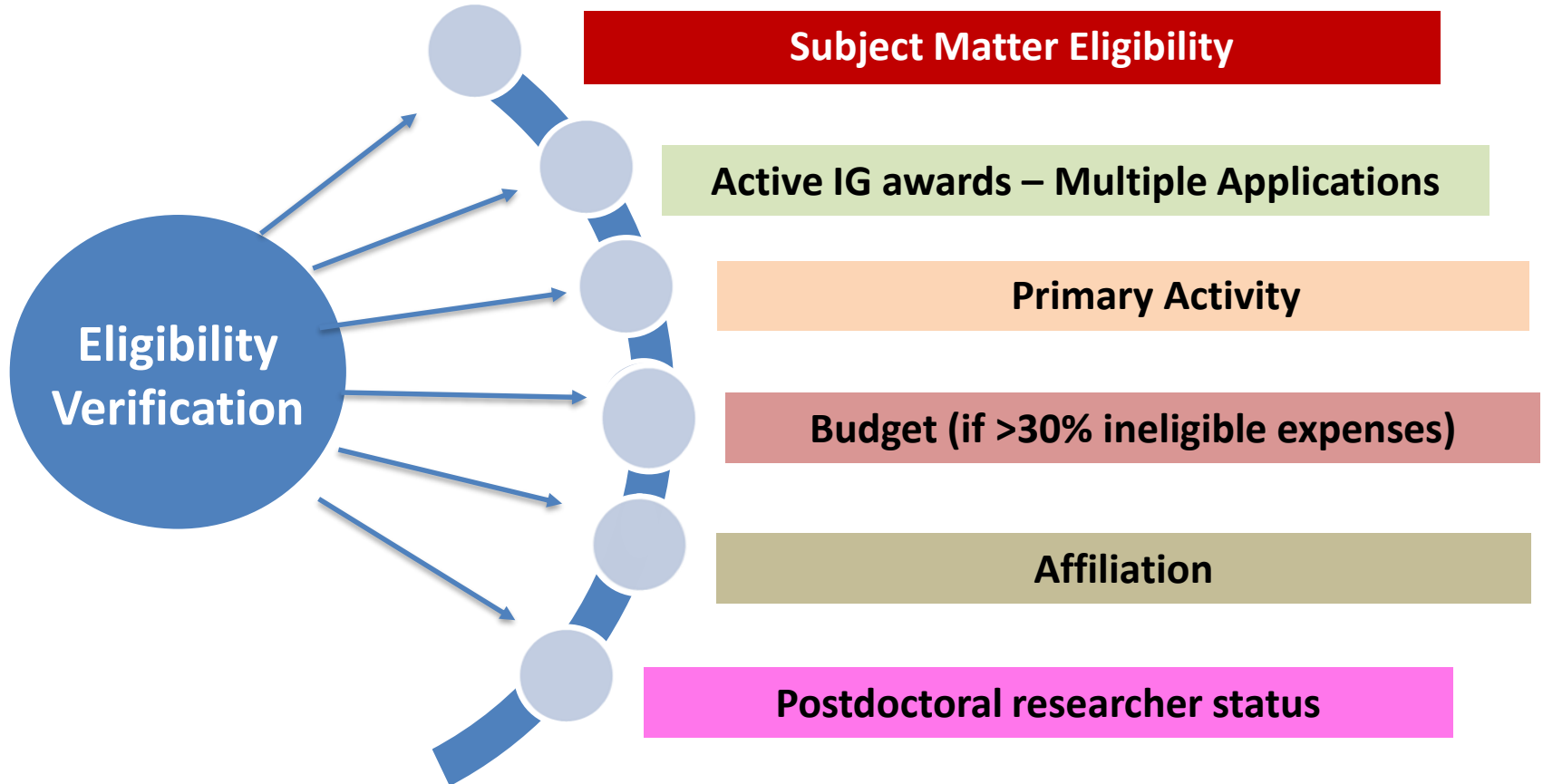


Projects receive \$15,000 in funding for each four-month internship

Canada Foundation for Innovation

- Canada Foundation for Innovation (CFI) : funding of Infrastructure and research support via CFI's John R. Evans Leaders Fund.
- Eligible institutions wishing to apply to the John R. Evans Leaders Fund for infrastructure support associated with a SSHRC Insight Grant must submit separate proposals to SSHRC and to the CFI.
- Institutions can submit proposals requesting up to \$800,000 from the CFI, with a maximum total eligible cost of \$2 million. The CFI funds up to 40 percent of a project's eligible infrastructure costs. Institutions must secure the remaining 60 percent of the required funding.
- Refer to the CFI website <https://www.innovation.ca/awards/john-r-evans-leaders-fund> for more information.

Eligibility Verification



Subject Matter Eligibility - Psychology

- ↳ SSHRC does not support most health-related research, such as clinical research, research related to therapy, diagnostic tools, rehabilitation and epidemiology. Clinical education is also ineligible.

SSHRC

- Social
- Developmental
- Personality
- Educational

NSERC

- Fundamental psychological processes
- Neural mechanisms

CIHR

- Direct relevance to or ultimate impact on human health

Subject Matter Eligibility

- ↘ TAIPR is also an option this year for cross-mandate research
- ↘ For eligibility-related advice, applicants may send a summary (including the proposed objectives) to the IG inbox: insightgrants@sshrc-crsh.gc.ca.
- ↘ For further information, see the [Subject Matter Eligibility Guidelines](#).

Impact Assessment

- SSHRC conducts impact assessment reviews for activities on federal lands or lands outside of Canada to which it provides financial assistance, to determine whether the proposed activities will have an adverse effect on the environment and/or social, economic and cultural factors.
- How: applicants to self-identify on grant applications, through screening questions, and complete the Impact Assessment Form.

For more information, consult: [SSHRC's Guidelines on Impact Assessment](#)

COMMITTEE STRUCTURE

- **Multi/Interdisciplinary**
- **Indigenous Research**
- **Discipline-based/Groups of disciplines**

Committee Structure

Insight Grants	Committees
01	Philosophy
02	History
03	Fine arts, research-creation
04	Literature
05	Medieval, classics, religious studies
07	Economics
08	Sociology, demography and related fields
09	Geography, urban planning and related fields
10	Psychology
11	Political science and public administration
12	Education
13	Anthropology, archaeology
14	Business, management and related fields
15	Linguistics and translation
16	Communications, media studies, gender studies, library and information science, related fields
17	Law and criminology
21	Indigenous research
22	Multidisciplinary or interdisciplinary humanities
23	Multidisciplinary or interdisciplinary social sciences
24	Tri-Agency Interdisciplinary Peer Review (TAIPR)

Inter/Multidisciplinary Applications

- ↳ Inter/Multidisciplinary Humanities
- ↳ Inter/Multidisciplinary Social Sciences
- ↳ Pilot Tri-Agency Interdisciplinary Committee
- ↳ Request for Inter/Multidisciplinary Evaluation (max 1 page)
- ↳ For Inter/Multidisciplinary Humanities and Social Sciences committees: Relevant expertise may also be sought from a larger pool of Insight Grants committee membership.

Tri-Agency Interdisciplinary Peer Review Committee (1)

A one-year pilot project that will provide a common interdisciplinary peer review process for research projects whose research areas include disciplines supported by more than one agency.

- It will run as part of the SSHRC October 2021 Insight Grants, CIHR Fall 2021 Project Grants, and NSERC Discovery Horizons competitions.
- Researchers will submit their applications to the agency that is responsible for the dominant research discipline or area, according to each funding opportunity's deadlines (1 October 2021 for Insight Grants).
- Relevant applications will be reviewed by a common interdisciplinary committee with broad expertise.
- Committee members will be recruited by each of the three agencies.

Tri-Agency Interdisciplinary Peer Review Committee (2)

- **Evaluation Process:**
- This shared committee will use a harmonized evaluation process, including evaluation criteria, that differs from the usual Insight Grants process.
- Three equally weighted [evaluation criteria](#):
 - Merit of the Proposed Research
 - Anticipated Outcomes
 - Applicant(s) Record
- For detailed descriptions of the criteria and sub-criteria, as well as the evaluation process, please consult the [committee's peer review guide](#).
- For more information, please consult the committee's [landing page](#) and [Frequently Asked Questions](#).

INDIGENOUS RESEARCH

SSHRC is committed to supporting and promoting social sciences and humanities research by and with Indigenous Peoples, including First Nations, Métis and Inuit Peoples.



Indigenous Research Committee

- ↘ All academic fields and the domains of knowledge specific to First Nations, Inuit & Metis (FNIM) cultural traditions
- ↘ Research by and with Indigenous Peoples
- ↘ Multidisciplinary committee composed of Indigenous and non-Indigenous members who are specialists in Indigenous research
- ↘ For further information, see the [Guidelines for the Merit Review of Indigenous Research](#). Email: insightgrants@sshrc-crsh.gc.ca

ADJUDICATION OVERVIEW

- **Committee Membership**
- **Adjudication Components & Process**
- **Evaluation Criteria & Scoring**
- **Feedback**

Committee Membership

- ↘ Experts drawn primarily from the academic community, as well as the public, private, and/or not-for-profit sectors, as required
- ↘ The composition of the committee is determined by:
 - the number of applications received
 - the representation of research expertise (disciplinary or sub-disciplinary)
 - university size
 - geographical region
 - language
 - gender

Adjudication Components

↳ Committees

- 2 - 3 Readers

↳ External Assessors

- 2 assessments per application, where possible
- Suggested Assessors (maximum 3)
- Provide additional information to committee
- Committee factors in their opinions as they judge appropriate

↳ Excluding evaluators

Evaluation Criteria and Scoring

Challenge (40%): Aim and importance of the endeavour

Feasibility (20%): The plan to achieve excellence

Capability (40%): The expertise to succeed

Note	Description
5 - 6	Very good - excellent
4 - 4.9	Good - very good
3 - 3.9	Satisfactory - good
Below 3	Unsatisfactory

*No weighting assigned to sub criteria.

Tri-Agency Open Access Policy

Peer-reviewed journal articles based on agency-funded research to be freely accessible within 12 months of publication, via:

- Online repositories
- Open-access journals

OPEN  **ACCESS**

Feedback

Applicants will receive the following information in their results packages:

- Notice of Decision (including competition statistics)
- Notice of Award (if the application was funded)
- Terms and Conditions of the Award (if the application was funded)
- External assessments received
- Committee Evaluation Form (if the application was discussed)

APPLICATION PREPARATION

Impact of COVID-19

Response to Previous Critiques

Knowledge Mobilization Plan

Description of Team / Student Training Plans

Budget & Budget Justification

Submitting Your Application

The Impact of COVID-19

Flexibility for applicants to provide information on the impact of COVID-19:

- Contingency plans may be included in the detailed description and will be assessed through the feasibility criteria
- Impacts on career may be described in the Career Interruptions and Special Circumstances section of the SSHRC CV
- Approach developed in response to concerns raised by the SSH community on how the impact of Covid-19 will be assessed in the merit review process
- The additional information is not mandatory

Grants Administration Measures (COVID-19)

- An additional 12 months may be approved (in addition to one auto-extension year) by the institution without the grant amendment form to grants with an end date between **February 1, 2021, and March 31, 2022**. For Insight Development Grants, the period ends **May 31, 2022**.
- Certain incremental **costs may be eligible and** be paid from agency funds. Includes remuneration costs for any members of the research team who are eligible to be paid from an agency grant.
- COVID-19 RELATED EXPENSES **are eligible expenditures**: i.e. travel cancel fees.
- Postponement of the **deadline for submitting financial reports (Forms 300 and 301) until September 30, 2021** for the 2020-21 (April 1, 2020, to March 31, 2021) Annual Reconciliation of Active Awards.

For more information, please see: [Tri-Agency Guide on Financial Administration](#) and [COVID-19: Impacts on SSHRC's policies and programs](#)

APPLICATION COMPONENTS

- Identification
- **Response to Previous Critiques**
- **Summary of Proposed Research**
- **Detailed Description**
- **Knowledge Mobilization Plan**
- List of References
- Expected Outcomes
- **Research team, previous output and student training**
- **Budget and Justification**
- Research Contributions
- Supporting Documents (Joint initiatives, Research Creation, etc.)

SUBMITTING YOUR APPLICATION (1)

START EARLY IF YOU HAVE A TEAM!

Applicants

1. Complete and verify application and SSHRC CV
2. Ensure all participants have included relevant attachments
3. Submit application for institutional approval

Co-applicants

1. Create and verify SSHRC CV
2. Accept the invitation and upload Research Contributions (PDF)

Collaborators

1. Fill out a profile
2. Accept invitation

Team members' CVs will hold up the whole application if they are not complete!

Submitting your application (2)

- ✓ Leave enough time... remember internal deadlines
- ✓ Complete all mandatory fields
- ✓ Attach all mandatory electronic uploads application
- ✓ **VERIFY AND PREVIEW YOUR APPLICATION!**
- ✓ Click the "Submit" button (i.e., Submit to Research Administrator) for institutional approval
- ✓ Institutions forward applications to SSHRC

Note: PhD students and postdoctoral researchers may submit their application directly to SSHRC. However, it is Recommended that they inform their Office of Research Services.

Recent IG Competition Statistics

	Oct. 2017	Oct. 2018	Oct. 2019	Oct. 2020
Number of Committees	23	22	22	25
Number of eligible applications	(A) 729 (B) 807	(A) 615 (B) 750	(A) 602 (B) 823	(A) 496 (B) 717
Overall success rate	(A) 51.6% (B) 43.5%	(A) 50.7% (B) 40.9%	(A) 50,50% (B) 38,80%	(A) 56,65% (B) 49,65%
Requested amount	\$ (A) 61,048,078 (B) 202,231,126	\$ (A) 52,048,696 (B) 188,427,889	\$ (A) 49,187,491 (B) 199,283,560	\$ (A) 40,260,473 (B) 170,550,024
Average requested	\$ (A)83,010 (B) 248,130	\$ (A)84.632 (B) 251,237	\$ (A) 81,707 (B) 242,143	\$ (A) 81,170 (B) 237,866
Awarded amount	\$ (A) 29,303,649 (B) 72,359,391	\$ (A)24,650,325 (B) 65,027,232	\$ (A) 25,163,846 (B) 71,968,609	\$ (A) 23,184,285 (B) 80,816,747
Average awarded	\$ (A)78,055 (B) 206,152	\$ (A)79,148 (B) 211,815	\$ (A) 82,776 (B) 225,607	\$ (A) 82,506 (B) 227,013

THANK YOU!

INSIGHT GRANTS

TEL.: 613-996-6976

EMAIL: INSIGHTGRANTS@SSHRC-CRSH.GC.CA

Technical Support

Tel.: 613-995-4273

Email: webgrant@sshrc-crsh.gc.ca



Social Sciences and Humanities
Research Council of Canada

Conseil de recherches en
sciences humaines du Canada

Canada