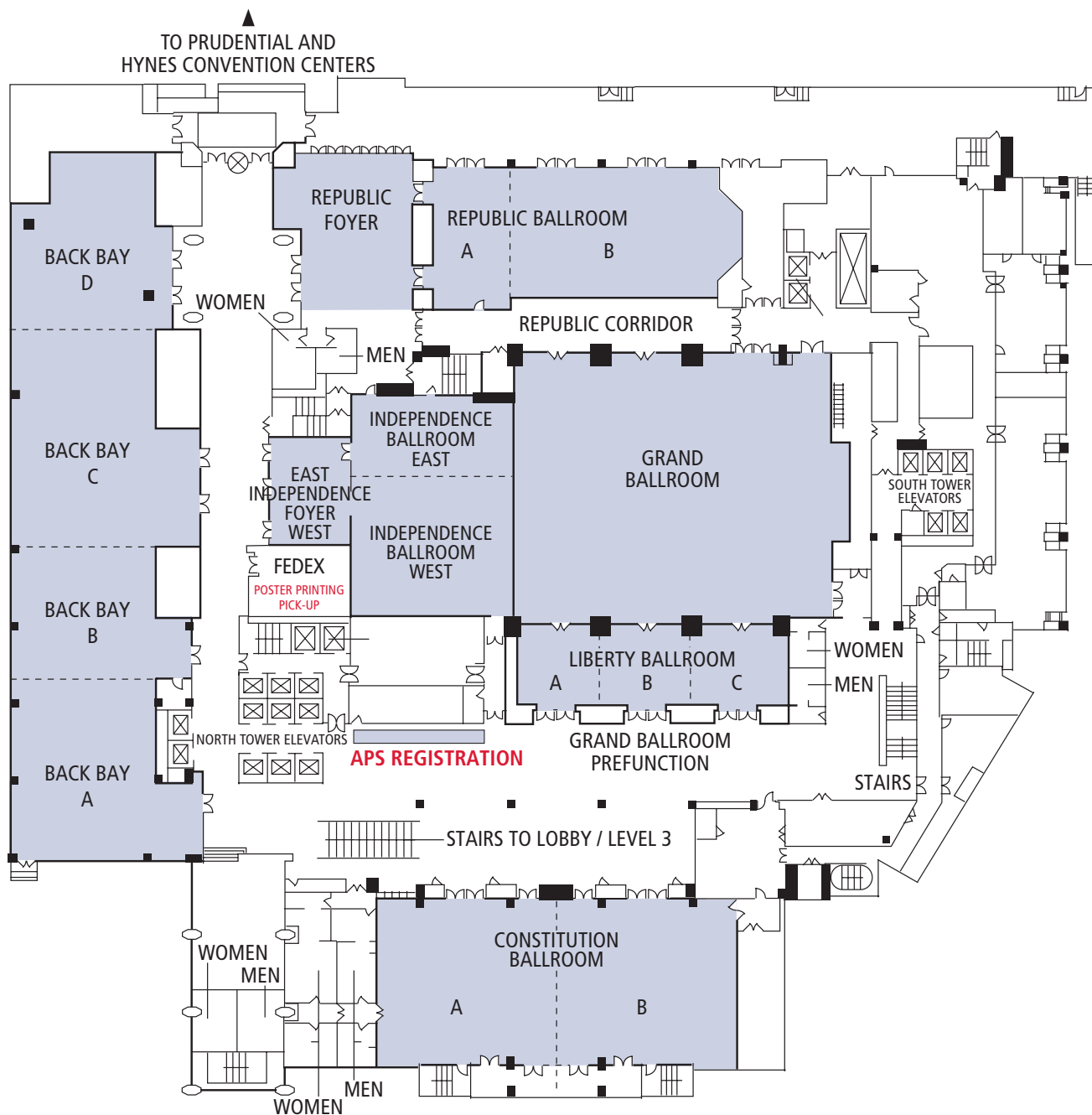
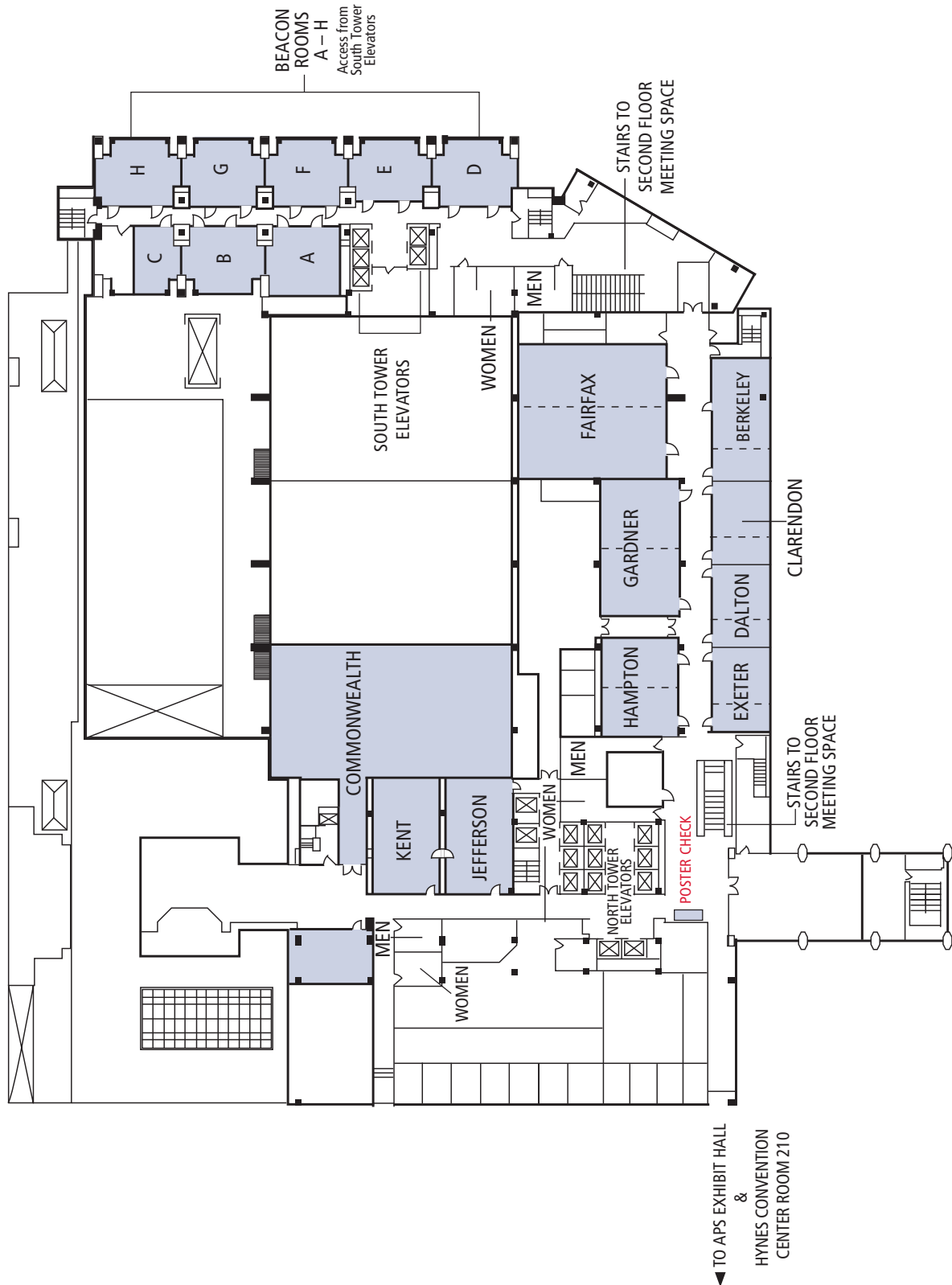


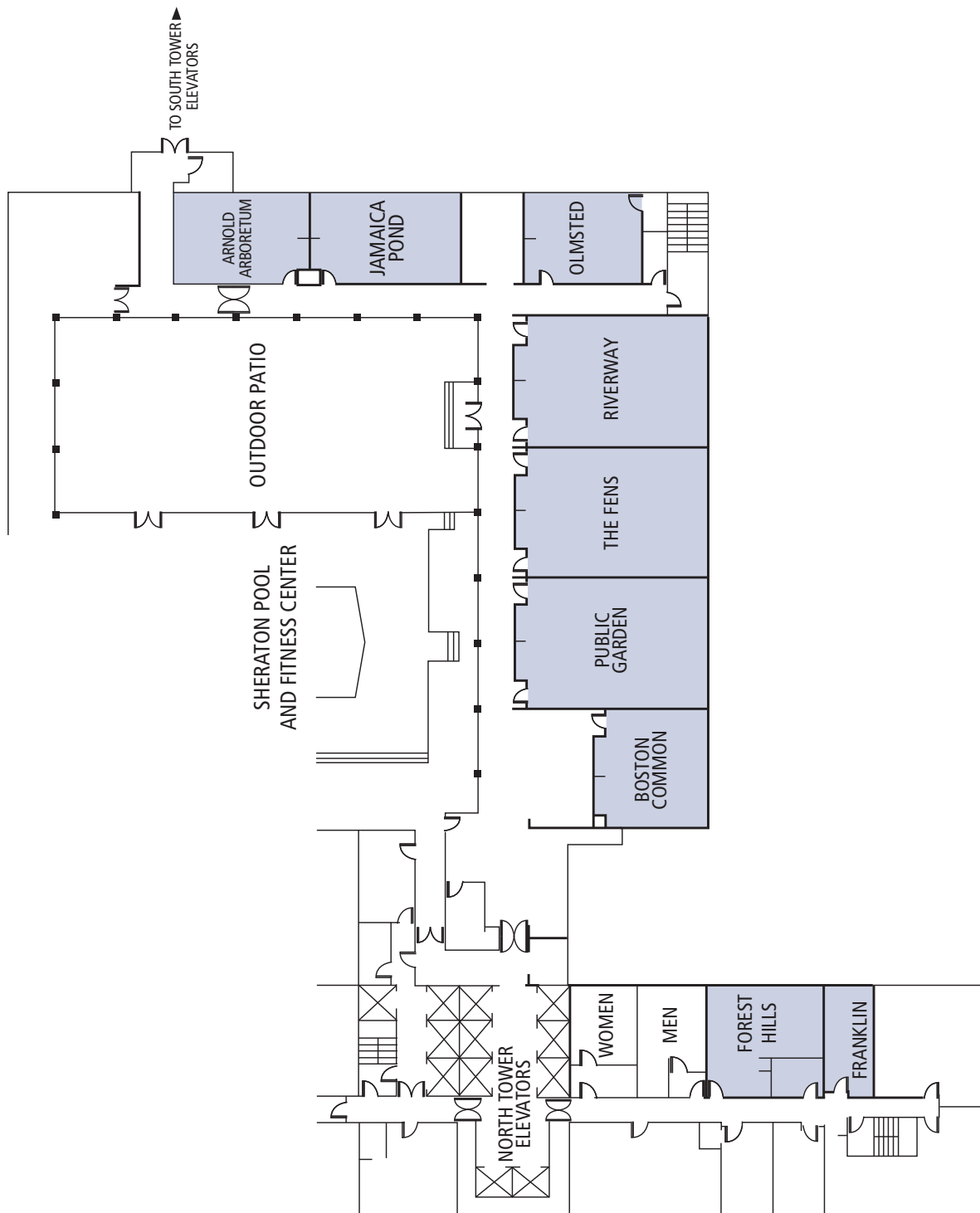
## Level 2: Meeting Rooms



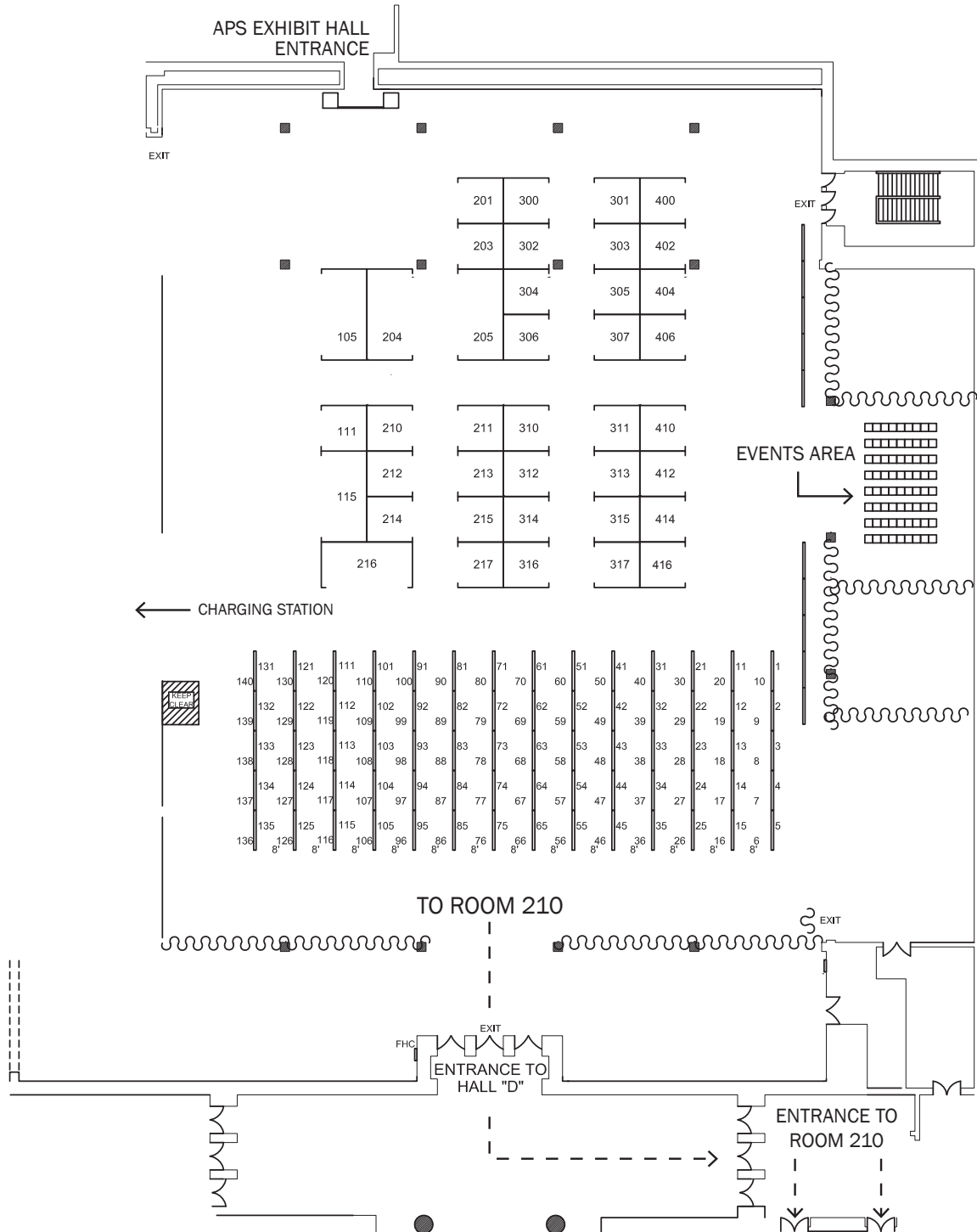
## Level 3: Meeting Rooms and APS Exhibit Hall



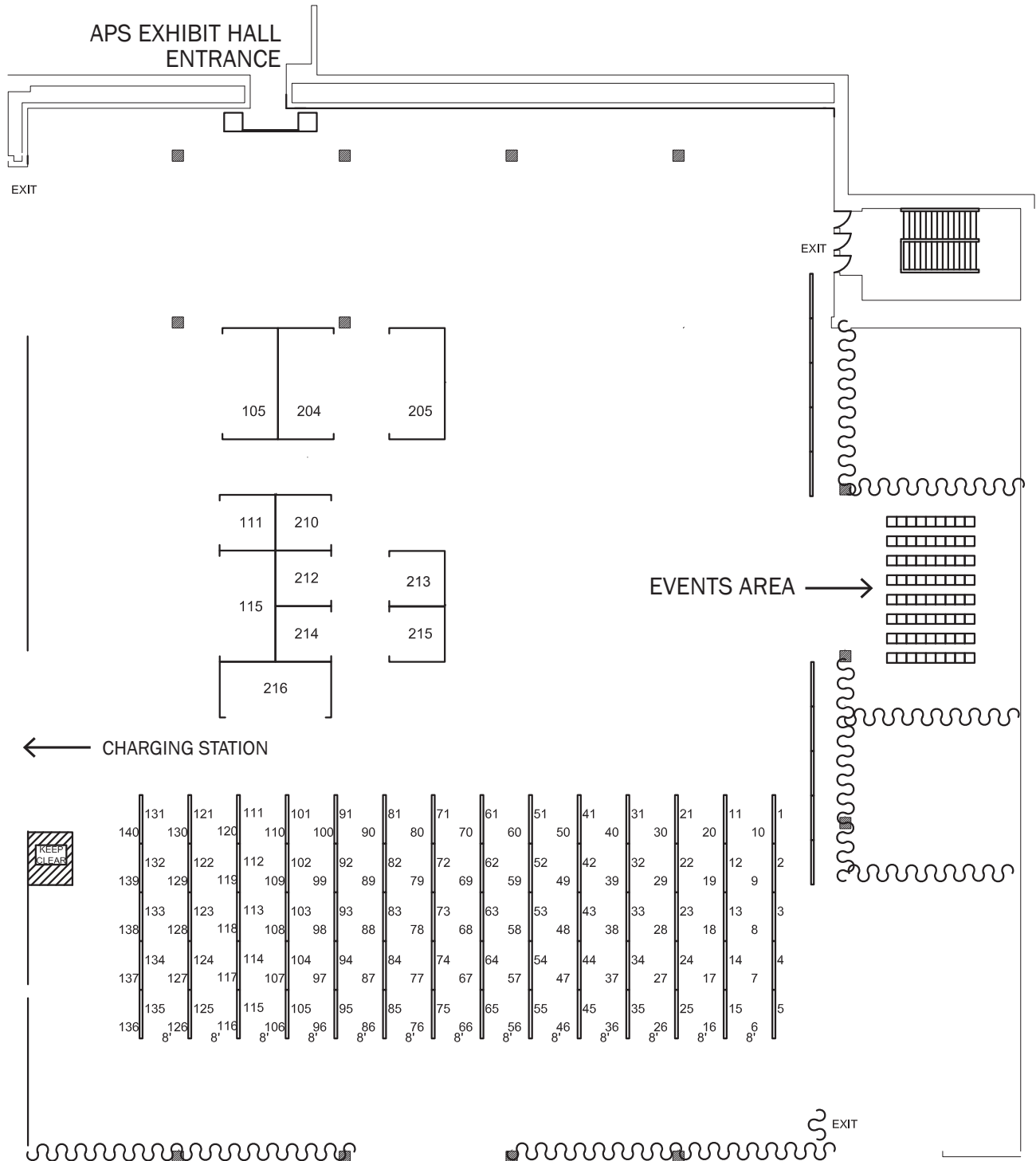
## Level 5: Meeting Rooms

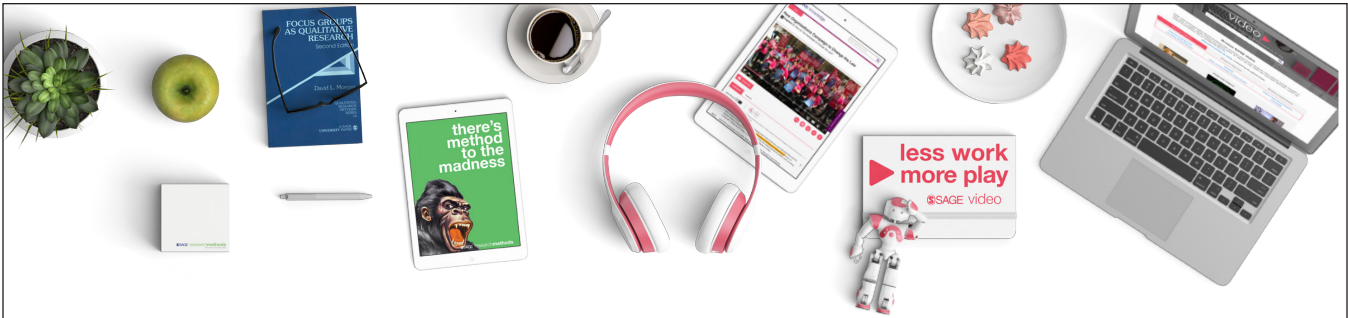


# Exhibitors Thursday – Saturday



# Exhibitors Sunday





## Online Teaching Resources from SAGE!

 **SAGE** research  
methods

### What every researcher needs

**SAGE Research Methods** provides your department with a universe of peer-reviewed resources covering the entire research methods and statistics curriculum, allowing you to create a custom reading and resource list for your course. The platform holds more than 1,000 books, reference works, and journal articles; more than 500 case studies written by researchers in the field; more than 120 teaching datasets optimized to allow students to practice analytical methods; and 120 hours of streaming video showing research in action.

[methods.sagepub.com](http://methods.sagepub.com)

 **SAGE** video

### Bringing teaching, learning and research to life

The **SAGE Video Psychology Collection** features more than 130 hours of video that will invigorate course teaching at all levels and provide assistance to the student and academic researcher. Watch original tutorials, many from SAGE's leading textbook authors, including walkthroughs on how to do psychological research, or how to understand many fascinating aspects of the field such as neuropsychology, drugs & behavior or social psychology; see professional psychologists in action, or venture back to the field's beginnings via footage of John B. Watson, Muzafer Sherif's and other early pioneers.

[sk.sagepub.com/video](http://sk.sagepub.com/video)

**WIN a \$50 Gift Card\***  
Visit us at booth #204

**PROUD PUBLISHER OF THE APS JOURNALS**

*\*Enter to win a \$50 gift card when you stop by the SAGE booth to get a personalized demo of one of our teaching resources and see how you can incorporate them into your courses!*

 **SAGE**  
Publishing

# TurkPrime Research and Education Tools

## MECHANICAL TURK TOOLKIT

The most useful toolkit for Mechanical Turk research  
Used by thousands of labs worldwide  
Over 40,000 studies completed

## PRIME PANELS SELF-SERVICE PLATFORM

Go Beyond Mechanical Turk!  
Access over 20 million participants  
Take Advantage of our Special Introductory Pricing!  
Stop by our booth 213 for more information and  
get a 10% discount on all Prime Panels studies!

## INSTRUCTIONAL TOOLS

Student and administrator accounts  
Easy allocation of funds to student accounts  
Reporting and accounting  
Administrator Dashboard to view all projects at a glance

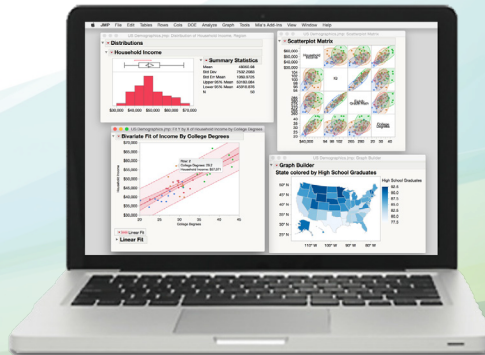
**TURKPRIME**<sup>SM</sup>  
Optimizing Crowdsourced Research



[www.turkprime.com](http://www.turkprime.com)

# jmp<sup>®</sup>

## Statistics, Visualization, Data Analysis, and Modeling



For Mac and Windows

Visit us at Booth #105  
or online, at [jmp.com/academic](http://jmp.com/academic)



**SONA-SYSTEMS.COM**

Follow us on  @SonaSystems



## MANAGE RESEARCH IN THE CLOUD

Switch from paper-based research to cloud-based research with Sona Systems participant pool management software for universities.

Universities who switch from paper-based methods to Sona Systems typically see:

**PARTICIPATION RATES ▲ 25-50%**

**NO-SHOW RATES BELOW ▼ 5%**



Try a free 30-day demonstration at  
[sona-systems.com](https://sona-systems.com)





**Boston University** Department of Psychological & Brain Sciences offers graduate training including PhD programs in **Brain, Behavior, and Cognition**, **Developmental Science** and **Clinical Psychology**. Apply by December 1. We also offer a one-year MA program in **Psychology**. Apply by May 15.

More information at [www.bu.edu/psych/](http://www.bu.edu/psych/)



**NEW!**

# SuperLab® X5

With EEG and Eye Tracker Support

(and possibly a third type of integration by APS time)

Visit Cedrus' booth for more information.

[www.cedrus.com](http://www.cedrus.com)  
1-800-CEDRUS1

**cedrus.**



# Recognizing Excellence Call For Nominations

To submit a nomination, or for more information visit [www.psychologicalscience.org/awards](http://www.psychologicalscience.org/awards)

2018

## Janet Taylor Spence Award

For Transformative Early Career Contributions

---

Recognizing investigators in the early stages of their career for research contributions or the development or advancement of research that cuts across fields of psychological science.

**Nomination Deadline: October 15, 2017**

2019

## William James Fellow Award

Honoring a lifetime of significant intellectual contributions to the basic science of psychology.

**Nomination Deadline: October 15, 2017**

2019

## James McKeen Cattell Fellow Award

Honoring a lifetime of outstanding contributions to the area of applied psychological research.

**Nomination Deadline: October 15, 2017**

2019

## Mentor Award

Recognizing those who have significantly fostered the careers of others, honoring APS Members who masterfully help students and others find their own voice and discover their own research.

**Nomination Deadline: October 15, 2017**

## Fellows

Awarded to APS Members who have made sustained outstanding contributions to the science of psychology in the areas of research, teaching, service, and/or application.

**Nomination Deadline: October 15, 2017**

## Rising Stars

Presented to outstanding psychological scientists in the earliest stages of their research career post-PhD.

**Nomination Deadline: September 30, 2017**

To submit a nomination or for more information, including past recipients and nomination materials, please visit

[www.psychologicalscience.org/awards](http://www.psychologicalscience.org/awards)

Questions? [awards@psychologicalscience.org](mailto:awards@psychologicalscience.org)







